



Product Catalog

Shenzhen Honyee Technology Co., Ltd.

V24007



Contents

I.	PLC - Programmable Logic Controller	1
1.	Standard PLC Type	1
i.	Product Series.....	1
ii.	Models.....	2
2.	Board Type	3
3.	PLC Expansion Cards	4
4.	PLC Expansion Modules.....	5
II.	PLC+HMI Combo	7
III.	HMI - Human Machine Interface	11
1.	Basic version.....	11
2.	General version.....	15
3.	Professional version.....	19
IV.	VFD and Soft Starters	23
1.	VFD Single phase 220v input and 3 phase output	24
2.	VFD Three Phase 380v input and 3 phase output	25
3.	VFD Three phase 220V input and 3 phase output.....	28
4.	Motor Soft Starter.....	30
5.	Braking Resistor	32
V.	Servo Drive & Motor	35

I. PLC - Programmable Logic Controller

1. Standard PLC Type

i. Product Series

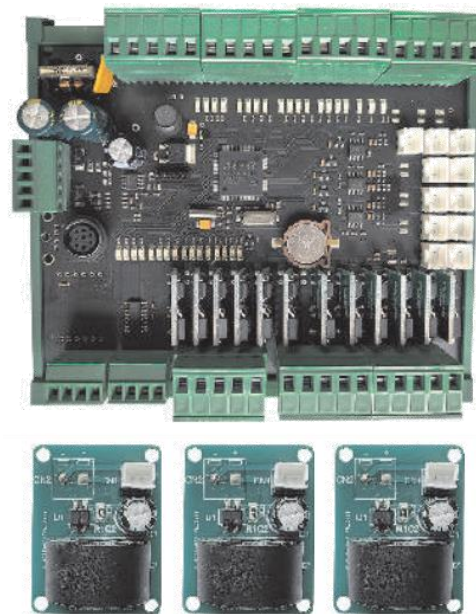
Series	10 series	20 series	1U series	2U series	3U series
Image					
Input	24VDC, NPN input				
Output	Transistor or relay or mixed				
I/O	12/8, 16/14	24/16, 36/24	8/8, 16/16		
Analog I/O	2AI/1AO, 4AI	2AI/1AO, 4AI, 8AI or others	Optional 4AI/2AO	4AI/2AO, 4AI, 8AI or others	
High speed count input	2*50K, 6*10K single-phase counting Or 1*30K, 2*5K dual-phase counting				
High speed pulse output	3*100KHz	4*100KHz			
Linear and circular interpolation	Yes				
Electronic cam	Yes				
COM port	2*RS232, 1*RS485		1*RS232, 2*RS485		
Load cell	Optional 2* load cells		No		
Ethernet	No	No	No	No	1
Expandable	1 card	1 card and 8 modules	No	8 modules	
Customization	① Customize logo ② PNP input ③ Ethernet ④ COM port ⑤ Expandable cards or modules, etc.				

ii. Models

Series	Models	DI/DO	Output type	AI/AO
10 Series	10-20MT	12/8	Transistor	/
	10-20MR	12/8	Relay	/
	10-30MT	16/14	Transistor	/
	10-30MR	16/14	Relay	/
20 Series	20-40MT	24/16	Transistor	/
	20-40MR	24/16	Relay	/
	20-60MT	36/24	Transistor	/
	20-60MR	36/24	Relay	/
1U series	1U-16MT	8/8	Transistor	/
	1U-16MR	8/8	Relay	/
	1U-32MT	16/16	Transistor	/
	1U-32MR	16/16	Relay	/
	1U-16MT-6AM	8/8	Transistor	4/2AO
	1U-16MR-6AM	8/8	Relay	4AI/2AO
2U series	2U-32MT	16/16	Transistor	/
	2U-32MR	16/16	Relay	/
	2U-16MT-6AM	8/8	Transistor	4AI/2AO
	2U-16MR-6AM	8/8	Relay	4AI/2AO
3U series	3U-16MT	8/8	Transistor	/
	3U-16MR	8/8	Relay	/

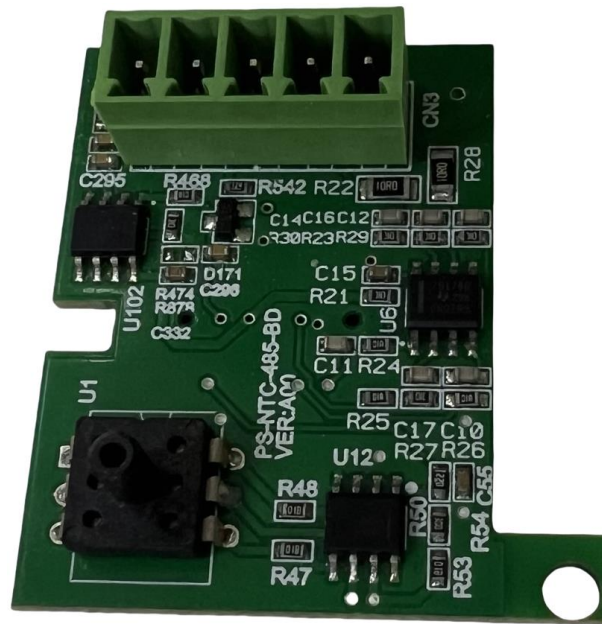
Series	Models	DI/DO	Output type	AI/AO
3U series	3U-32MT	16/16	Transistor	/
	3U-32MR	16/16	Relay	/
	3U-16MT-6AM	8/8	Transistor	4AI/2AO
	3U-16MR-6AM	8/8	Relay	4AI/2AO

2. Board Type



Model	Specification
10-14BR	8DI/6DO, relay outputs, RS232
10-16BT	8DI/8DO, transistor outputs, RS232+RS485+2HY+2AI
10-32BR-11AM	16DI/16DO, relay outputs, 9AI: 0~10V, 4~20mA, PT100, NTC, up to 8 current sampling 2AO: 0~10V
28-40BT-4HY-6AM	24DI/16DO, transistor outputs, 4AI+2AO+6HY, 4 channels of 5V differential pulse + direction

3. PLC Expansion Cards



Model	Specifications
10-4EX-BD	4 digital inputs
10-4EY-BD	4 digital transistor outputs
10-3AM-BD	2 analog inputs and 1 analog output Input: optional 0~10V, 4~20mA, PT100 Output: optional 0~10V/4~20mA
10-4AD-BD	4 analog inputs, optional 0~10V, 4~20mA, PT100
10-485-DA-BD	RS485 communication + 1 analog output, RS485 communication baud rate can be set, analog output supports 0~10V, 4~20mA
10-CAN-BD	CANbus communication + 1 analog input, CANbus communication baud rate can be set, analog input supports 0~10V, 4~20mA, PT100

4. PLC Expansion Modules



Model	Specifications
2U-0016ET	16 transistor outputs
2U-16ET-6AM	16 transistor outputs 4AI/ 2AO
2U-1600EN	16 digital inputs
2U-0808ET	8DI/8DO, transistor outputs
2U-0808ER	8DI/8DO, relay outputs
2U-0808ET-6AM	8DI/8DO, transistor outputs 4AI/ 2AO
2U-1616ET	16DI/16DO, transistor outputs
2U-1616ER	16DI/16DO, relay outputs
2U-2408ET	24DI/8DO, transistor outputs

2U-0824ET	8DI/24DO, transistor outputs
2U-4AD	4AI, 0-10V/ 4-20mA
2U-8AD	8AI, 0-10V/ 4-20mA
2U-4PG	4 positioning control module, or 8DI/8DO
2U-4PG-0808E	4 positioning control module + 8DI/8DO expansion

II. PLC+HMI Combo



Model	HC043M-26T-4AM	HC070M-48T	HC070M-48C	HC070M-32T	HC070M-32C
Size	4.3"	7"			
Display	Resolution	480*272 pixels	800*480 pixels		
	Panel	4-wire high-precision touch panel			

Model	HC043M-26T-4AM	HC070M-48T	HC070M-48C	HC070M-32T	HC070M-32C
Display	Color			260,000	
	Backlight			LED	
	Contrast			400:1	
	Brightness			400cd/m ²	
Structure	Dimension	128*86*36mm	203*149*36mm		
	Cut-out size	129*78mm	192*138mm		
	Net weight	0.4kg	0.8kg		
Housing Material			ABS+PC		
Protection Level			IP65 (front panel)		
Supply	Voltage			DC24V(±15%)	
	Power	6W	10W		
Memory			128M FLASH/64M DDR		

Model	HC043M-26T-4AM	HC070M-48T	HC070M-48C	HC070M-32T	HC070M-32C
CPU	ARM9 400MHz RISC				
Digital Inputs	14	24	24	16	16
Digital Outputs	12T	24T	8T 16R	16T	8T 8R
Analog Inputs And Outputs	2AI / 2AO	8AI or 6AI 2AO or 4AI 2AO			
AI Type	0-10V as default (can customize 0-20mA, PT100, NTC)				
AO Type	0 - 10V				
RS485	1				
High Speed Inputs	2*50KHz (X0/X1), 6*10KHz (X2~X7)				
High Speed Outputs	4* 100KHz (Y0~Y3)				
Rtc	Capacitance retention (2 months retention)				
Program Capacity	12K				24K
Digital Register	D0~D7999				

Model	HC043M-26T-4AM	HC070M-48T	HC070M-48C	HC070M-32T	HC070M-32C
Power Retention	User settings, 6k Byte				
Interface	USB-Mini	PLC programming download port			
	USB-A	USB flash drive upgrade, data backup			
Test	- Hi-pot test 1000V, 1 minute				
	- Static test level 4 ±8000V				
	- Complies with EN55022 and EN55024 standards				
	- Compliant with FCC, Class A				
Environ- Ment	Working Temp.	-10~60°C			
	Working Humidity	10~90% RH			
	Mechanical Vibration	10-25Hz (XYZ direction 2g/30min)			
Software	HMI	MCGS software			
	PLC	GX Works			

III. HMI - Human Machine Interface

1. Basic version



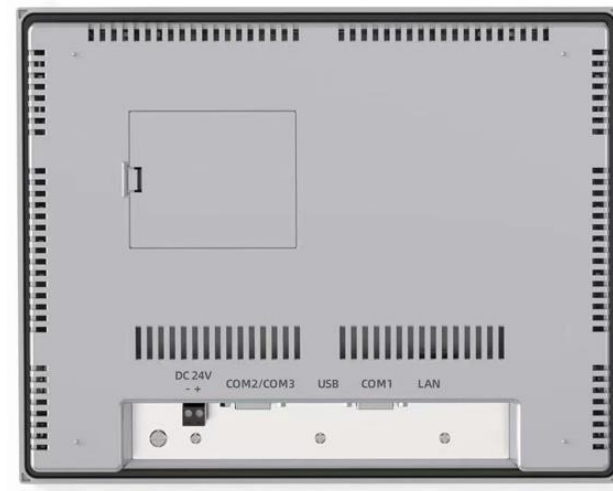
Specification	Model	HY0401B	HY0701B	HY1001B
Display	LCD view angle	50°/60°/60°/60° (T/B/L/R)		
	Panel	4.3" TFT LCD	7" TFT LCD	10.1" TFT LCD
	Resolution	480×272	800×480	1024×600

Specification	Model	HY0401B	HY0701B	HY1001B
	Color	24-bit (16,770,000 colors)		
	Brightness	300 cd/m ²		
	Back light	LED		
	LCD life	20,000 hours		
	Touch panel	4-wire industrial resistive touch screen		
	CPU	ARM Cortex-A7 dual-core 1.2GHz		
	Memory	128M Flash + 64M DDR3	128M Flash + 128 DDR3	128M Flash + 128 DDR3
	RTC	Built-in RTC		
	Ethernet	No		
COM port	USB terminal	1 USB Host 2.0		
	Serial COM port	COM1: RS232/RS485		

Specification	Model	HY0401B		HY0701B		HY1001B	
Power Supply	Rated power	< 3W		< 7W		< 10W	
	Rated voltage	DC24V, working range DC 9V~28V					
	Protection	No isolation					
	Allow power failure	< 5mS					
Structure	PCB coating	No					
	Dimension	128*102*36mm		202*165*43mm		272*215*43mm	
	Cut-out size	120*94mm		192*138mm		260*202mm	
	Mechanical structure	Engineering Plastics					
	Protection			Front panel: IP65		Rear cover: IP20	
	Weight	≈0.3kg		≈0.6kg		≈1kg	
	Installation	Panel embedded					

	Model	HY0401B	HY0701B	HY1001B
Specification				
	Working temp.		0~50°C	
	Storage temp.		-20~60°C	
Environment	Humidity		10~90%RH (non-condensing)	
	Shock resistance		10~25Hz (X, Y, Z directions 2G/30 mins)	
	Cooling method		Natural air cooling	
	Certification		Compliant with CE certification standards	
	Software		Easy Manager PRO V2.02 or above	

2. General version



Specification	Model	HY0402G (HY0402GE)	HY0701G (HY0701GE)	HY0702G (HY0702GE)	HY1001G (HY1001GE)	HY1501GE
Display	LCD view angle	60°/75°/75°/75° (T/B/L/R)				80°/80°/80°/80° (T/B/L/R)
	Panel	4.3" TFT LCD	7" TFT LCD		10.1" TFT LCD	15.6" TFT LCD
	Resolution	800×272	800×480	1024×600	1024×600	1920×1080
	Color	24-bit (16,770,000 colors)				

Specification	Model	HY0402G (HY0402GE)	HY0701G (HY0701GE)	HY0702G (HY0702GE)	HY1001G (HY1001GE)	HY1501GE
	Brightness	400 cd/m ²				220cd/m ²
	Back light	LED				
	LCD life	35,000 hours				
	Touch panel	4-wire industrial resistive touch screen				
	CPU	ARM Cortex-A7 dual-core 1.2GHz				ARM Cortex-A53 quad-core 1.5GHz
	Memory	128M Flash + 128M DDR3				1M Flash + 8G DDR3
	RTC	Built-in RTC				
	Ethernet	1 * 10M/100M adaptive (<i>i</i> HY0402GE/ HY0701GE/ HY0702GE/HY1001GE/ HY1501GE ONLY)				
	USB terminal	1 USB Host 2.0				
COM port	Serial COM port	COM1: RS232 COM2: RS485/RS422 COM3: RS485				
	IoT	No	Support 4G or WIFI expansion (<i>i</i> HY0701GE/ HY0702GE/HY1001GE/ HY1501GE ONLY)			

Specification	Model	HY0402G (HY0402GE)	HY0701G (HY0701GE)	HY0702G (HY0702GE)	HY1001G (HY1001GE)	HY1501GE	
Power Supply	Rated power	< 3W	< 10W				
	Rated voltage	DC24V, working range DC 12V~28V					
	Protection	Lightning surge protection					
	Allow power failure	< 5mS					
	PCB coating	No (can customize)					
Structure	Dimension	128*102*36mm	202*165*43mm		272*215*43mm	395*258*52mm	
	Cut-out size	120*94mm	192*138mm		260*202mm	384*247mm	
	Mechanical structure	Engineering Plastics				Industrial die-cast aluminum	
	Protection	Front panel: IP65		Rear cover: IP20			
	Weight	≈0.5kg	≈0.8kg		≈1.2kg	≈2.4kg	
	Installation	Panel embedded					

Specification	Model	HY0402G (HY0402GE)	HY0701G (HY0701GE)	HY0702G (HY0702GE)	HY1001G (HY1001GE)	HY1501GE
Environment	Working temp.	0~50°C				
	Storage temp.	-20~60°C				
	Humidity	10~90%RH (non-condensing)				
	Shock resistance	10~25Hz (X, Y, Z directions 2G/30 mins)				
Environment	Cooling method	Natural air cooling				
Certification		Compliant with CE certification standards				
Software		Easy Manager PRO V2.02 or above				

3. Professional version



Specification	Model	HY0702PE	HY1001PE	HY1501PE
	LCD view angle	80°/80°/80°/80° (T/B/L/R)		
Display	Panel	7" TFT LCD	10.1" TFT LCD	15.6" TFT LCD
	Resolution	1024×600		1920×1080
	Color	24-bit (16,770,000 colors)		

Specification	Model	HY0702PE	HY1001PE	HY1501PE
Display	Brightness	600 cd/m ²		250cd/m ²
	Back light	LED		
	LCD life	50000 hours		
Touch panel		4-wire industrial resistive or high voltage capacitive touch screen		
CPU		ARM Cortex-A7 dual-core 1.2GHz or ARM Cortex-A53 quad-core 1.5GHz		ARM Cortex-A53 quad-core 1.5GHz
Memory		128M Flash + 128 DDR3 or 1G Flash +8G DDR3		1G Flash +8G DDR3
RTC		Built-in RTC		
COM port	Ethernet	1* 10M/100M adaptive		
	USB terminal	1* USB Host 2.0		
	Serial COM port	COM1: RS232		
		COM2: RS485/RS422; COM3: RS485		
IoT		Support 4G or WIFI expansion		

Specification		Model	HY0702PE	HY1001PE	HY1501PE
Power Supply	Rated power			< 10W	
	Rated voltage			DC24V, working range DC 12V~28V	
	Protection			Lightning surge protection	
	Allow power failure			< 5mS	
	PCB coating		No (can customize)		
Structure	Dimension		272*215*43mm		395*258*52mm
	Cut-out size	192*138mm		260*202mm	384*247mm
	Mechanical structure		Die-cast aluminum alloy		Industrial die-cast aluminum
	Protection		Front panel: IP68 Rear cover: IP20		
	Weight	≈1.2kg		≈1.8kg	≈2.5kg
	Installation		Panel embedded		

Specification	Model	HY0702PE	HY1001PE	HY1501PE
Environment	Working temp.		0~50°C	
	Storage temp.		-20~60°C	
	Humidity		10~90%RH (non-condensing)	
	Shock resistance		10~25Hz (X, Y, Z directions 2G/30 mins)	
	Cooling method		Natural air cooling	
Certification		Compliant with CE certification standards		
Software		Easy Manager PRO V2.02 or above		

IV. VFD and Soft Starters



Honyee's high-performance VFDs embody a new concept in research and development, offering unique control models that deliver high torque, precision, variable speed range, and low noise operation.

The EM10 series VFDs, integrating IGBT, braking, and RS485 functions, offer power capacities up to 800KW. These VFDs support various input voltages, precise frequency resolution, multiple control modes including sensor-less vector control, closed-loop vector control, and V/F control, as well as advanced features like built-in simple PLC, PID control, auto voltage regulation, torque limiting, and high-performance current vector control technology for efficient and reliable motor control across industrial operations.

1. VFD Single phase 220v input and 3 phase output

Model	Voltage (V)	Power (KW)	Current (A)	G.W. (KG)	Dimension (mm)	Mounting Holes (mm)
HY10-G1-1d5	220	1.5	7	2	100/151/116	89/140/Φ4
HY10-G1-2d2	220	2.2	10			
HY10-G1-004	220	4	16	5	162/250/191	148/238/Φ5.5
HY10-G1-5d5	220	5.5	23			

2. VFD Three Phase 380v input and 3 phase output

Model	Voltage (V)	Power (KW)	Current (A)	G.W. (KG)	Dimension (mm)	Mounting holes (mm)
HY10-G3-1d5/P3-2d2	380	1.5/2.2	3.8/5.1	2	100/151/116	89/140/Φ4
HY10-G3-2d2/P3-004		2.2/4.0	5.1/9			
HY10-G3-004/P3-5d5		4.0/5.5	9/13	3	120/205/166	108/195/Φ4.5
HY10-G3-5d5/P3-7d5		5.5/7.5	13/17			
HY10-G3-7d5/P3-011		7.5/11	17/25			
HY10-G3-011/P3-015		11/15	25/32	5	162/250/191	148/238/Φ5.5
HY10-G3-015/P3-018		15/18.5	32/37			
HY10-G3-018/P3-022		18.5/22	37/45	10	223/323/207	207/307/Φ5.5
HY10-G3-022/P3-030		22/30	45/60			
HY10-G3-030/P3-037		30/37	60/75			
				23	275/445/232	180/400/Φ7

Model	Voltage (V)	Power (KW)	Current (A)	G.W. (KG)	Dimension (mm)	Mounting holes (mm)
HY10-G3-037/P3-045	380	37/45	75/91	23	275/445/232	180/400/Φ7
HY10-G3-045/P3-055	380	45/55	91/112	30	300/460/250	256/473/Φ10
HY10-G3-055/P3-075	380	55/75	112/150			
HY10-G3-075/P3-090	380	75/90	150/176	40	335/495/250	286/483/Φ10
HY10-G3-090/P3-110	380	90/110	176/210			
HY10-G3-110/P3-132	380	110/132	210/253	55	410/610/280	260/575/Φ12
HY10-G3-132/P3-160	380	132/160	253/304			
HY10-G3-160/P3-200	380	160/200	304/377	80	460/710/335	320/690/Φ12
HY10-G3-200/P3-220	380	200/220	377/426			
HY10-G3-220/P3-250	380	220/250	426/465	110	535/885/370	360/830/Φ12
HY10-G3-250/P3-280	380	250/280	465/520			
HY10-G3-280/P3-315	380	280/315	520/585			

Model	Voltage (V)	Power (KW)	Current (A)	G.W. (KG)	Dimension (mm)	Mounting holes (mm)
HY10-G3-315	380	315	585	120	535/1130/370	360/830/Φ12
HY10-G3-355	380	355	650			
HY10-G3-400	380	400	725			
HY10-G3-450	380	450	820	170	650/1300/415	360/990/Φ12
HY10-G3-500	380	500	860			
HY10-G3-560	380	560	950			
HY10-G3-630	380	630	1100	230	810/1560/445	600/1250/Φ16
HY10-G3-710	380	710	1200			
HY10-G3-800	380	800	1300			

3. VFD Three phase 220V input and 3 phase output

Model	Voltage (V)	Power (KW)	Current (A)	G.W. (KG)	Dimension (mm)	Mounting holes (mm)
HY10-G2-d75	220	0.75	3.8/5.1	2	100/151/116	89/140/Φ4
HY10-G2-1d5		1.5	5.1/9			
HY10-G2-2d2		2.2	9/13	3	120/205/166	108/195/Φ4.5
HY10-G2-004		3.7	17/25			
HY10-G2-5d5		5.5	25/32			
HY10-G2-7d5		7.5	32/37	10	223/323/207	207/307/Φ5.5
HY10-G2-011		11	45/60			
HY10-G2-015		15	60/75			
HY10-G2-018		18.5	75/91	23	275/445/232	180/400/Φ7

Model	Voltage (V)	Power (KW)	Current (A)	G.W. (KG)	Dimension (mm)	Mounting holes (mm)
HY10-G2-022	220	22	91/112	30	300/460/250	256/473/Φ10
HY10-G2-030		30	112/150			
HY10-G2-037		37	150/176	40	335/495/250	286/483/Φ10
HY10-G2-045		45	176/210			
HY10-G2-055		55	210/253	55	410/610/280	260/575/Φ12
HY10-G2-075		75	304/377	80	460/710/335	320/690/Φ12

4. Motor Soft Starter



Honyee motor soft starter is suitable for squirrel cage asynchronous motor control with various loads to ensure reliable start of motor. It has a complete system protection function, extend the service life of the system, reduces the cost of the system, improves the reliability of the system and compatible with various functions of all devices. It is a new ideal alternative for traditional star triangle starter and self-coupling decompression starter.

- Effectively reduce the starting current of the motor. Reduce the distribution capacity, avoid grid expansion investment.
- Reduce the starting stress of motor and load equipment, prolong the service life of the motor and related equipment.
- Soft stopping function can effectively solve the parking surge problem of inertial systems which can't be achieved by the traditional starting equipment.
- It has six unique starting mode and can adapt to the complex motor and load to achieve perfect priming effect.

- With complete and reliable protection function, it effectively protects the safety of motor and related production equipment.
- The intelligent motor soft starter, with the application of network technology and motor control technology, can adapt to the rapid development of electric power automation technology in the higher requirements.

Model	Voltage (V)	Power (KW)	Current (A)	G.W. (KG)	Dimension (mm)
HY-GU3-015	380	15	30	6	240*105*168.5
HY-GU3-030	380	30	60		
HY-GU3-045	380	45	90	8	282.5*135*184.5
HY-GU3-055	380	55	110		
HY-GU3-075	380	75	150		
HY-GU3-090	380	90	180	13	370.5*190*224
HY-GU3-110	380	110	230		
HY-GU3-160	380	160	320	18	393*225*226
HY-GU3-200	380	200	400		
HY-GU3-280	380	280	560	40	586*483*296
HY-GU3-355	380	355	700		
HY-GU3-400	380	400	800		

5. Braking Resistor

Brake Unit/ Braking modules									
Model	Voltage	Power (Light Load) Kc10%	Power (Heavy Load) Kc25%~40%	Rated current (A)	Max. Current (A)	Min. Resistance (Ω)	Dimension (H*W*D) mm	Installation (H*W)	G.W (KG)
HY-BU1		<22kW	<15KW	6	33	33			
HY-BU2	680VDC	30-55kW	18.5-30KW	10	75	20	182*130*109	152*130	3
HY-BU3		75-90kW	37-55KW	15	100	13.6			
HY-BU2H		110-132KW	75-90KW	30	150	7.5			
HY-BU3H		160-180kW	90-110kW	70	150	5.6			
HY-BU4H	670VDC	200-250KW	132-200KW	85	200	4	352*186*167	340*140	8
HY-BU5H		280-400KW	250-315KW	120	300	2.8			
HY-BU6H		450-500KW	350-400KW	160	450	2			

Braking Resistor							
Porcelain Winding						Aluminum Enclosure	
Model	Voltage (kV)	Power (W)	Resistance (Ω)	Dimension (L*D) (mm)	N.W (KG)	Dimension (L*W*H) (mm)	N.W (KG)
HYBR-100W*RJ	<1.2kV	100	2 ~1000	140*28	0.2	140*40*20	0.2
HYBR-150W*RJ		150		170*28	0.2	185*40*20	0.3
HYBR-200W*RJ		200		215*28	0.2	165*60*30	0.5
HYBR-250W*RJ		250		267*28	0.3	-	-
HYBR-300W*RJ		300		330*40	0.6	215*60*30	0.6
HYBR-400W*RJ		400		330*50	0.8	265*60*30	0.9
HYBR-500W*RJ		500		330*50	1.1	285*60*30	1.0
HYBR-750W*RJ		750		300*60	1.5	330*60*30	1.5

Braking Resistor							
Porcelain Winding						Aluminum Enclosure	
Model	Voltage	Power (W)	Resistance (Ω)	Dimension (L*D) (mm)	N.W (KG)	Dimension (L*W*H) (mm)	N.W (KG)
HYBR-1000W*RJ	<1.2kV	1000	2 ~1000	300*70	2.0	385*60*30	2.0
HYBR-1500W*RJ		1500		360*70	2.3	400*50*107	3.5
HYBR-2000W*RJ		2000		420*70	2.6	450*50*107	4.0
HYBR-2500W*RJ		2500		420*70	2.6	485*50*107	4.5
HYBR-3000W*RJ		3000		420*80	3.0	550*50*107	5.0
HYBR-3500W*RJ		3500		430*90	4.0	-	-
HYBR-4000W*RJ		4000		550*90	6.0	650*50*107	6.0
HYBR-4500W*RJ		4500		500*100	6.0	-	-
HYBR-5000W*RJ		5000		550*100	6.0	750*50*107	7.0
HYBR-6000W*RJ		6000		550*100	7.0	850*50*107	8.0

V.Servo Drive & Motor

Servo Motor						Servo Drive
Model	Series	Torque (N.m)	Speed (rpm)	Power (KW)	Current (A)	Model
HY-60S006N30S22	60	0.64	3000	200W	1.7	
HY-60S006N30S42	60	0.64	3000	200W	1.7	HYSD8-1S028PA
HY-60S012N30S22	60	1.27	3000	400W	2.5	HYSD8-1H028PA
HY-60S012N30S42	60	1.27	3000	400W	2.5	
HY-80S024N30S22	80	2.39	3000	750W	4.8	HYSD8-1S055PA
HY-80S024N30S42	80	2.39	3000	750W	4.8	HYSD8-1H055PA
HY-80S032N30S22	80	3.18	3000	1KW	7	
HY-80S032N30S42	80	3.18	3000	1KW	7	HYSD8-1S076PA

Servo Motor						Servo Drive
Model	Series	Torque (N.m)	Speed (rpm)	Power (KW)	Current (A)	Model
HY-130048N20S22	130	4.8	2000	1KW	4.6	HYSD8-1S055PA
HY-130048N20S42	130	4.8	2000	1KW	4.6	HYSD8-1H055PA
HY-130072N20S22	130	7.2	2000	1.5KW	9.3	HYSD8-1S100PA
HY-130072N20S42	130	7.2	2000	1.5KW	9.3	HYSD8-1H100PA
HY-130S096N20S22	130	9.6	2000	2KW	14.2	HYSD8-1H150PA
HY-130S096N20S42	130	9.6	2000	2KW	14.2	
HY-130S143N20S22	130	14.3	2000	3KW	13.3	
HY-130S143N20S42	130	14.2	2000	3KW	13.3	
HY-180E143N20S22	180	14.3	2000	3KW	8.7	HYSD8-3H120PA
HY-180E143N20S42	180	14.3	2000	3KW	8.7	

Servo Motor						Servo Drive
Model	Series	Torque (N.m)	Speed (rpm)	Power (KW)	Current (A)	Model
HY-180E191N15S22	180	19.1	1500	3KW	11.6	HYSD8-3H120PA
HY-180E191N15S42	180	19.1	1500	3KW	11.6	
HY-180E191N20S22	180	19.1	2000	4KW	11.6	
HY-180E191N20S42	180	19.1	2000	4KW	11.6	
HY-180E260N15S22	180	26	1500	4KW	15.1	HYSD8-3H180PA
HY-180E260N15S42	180	26	1500	4KW	15.1	
HY-180E260N20S22	180	26	2000	5.5KW	15.1	
HY-180E260N20S42	180	26	2000	5.5KW	15.1	
HY-180E350N15S22	180	35	1500	5.5KW	21.4	HYSD8-3H260PA
HY-180E350N15S42	180	35	1500	5.5KW	21.4	

Servo Motor						Servo Drive
Model	Series	Torque (N.m)	Speed (rpm)	Power (KW)	Current (A)	Model
HY-180E358N20S22	180	35.8	2000	7.5KW	20.8	HYSD8-3H260PA
HY-180E358N20S42	180	35.8	2000	7.5KW	20.8	
HY-180E478N15S22	180	47.8	1500	7.5KW	26.7	
HY-180E478N15S42	180	47.8	1500	7.5KW	26.7	